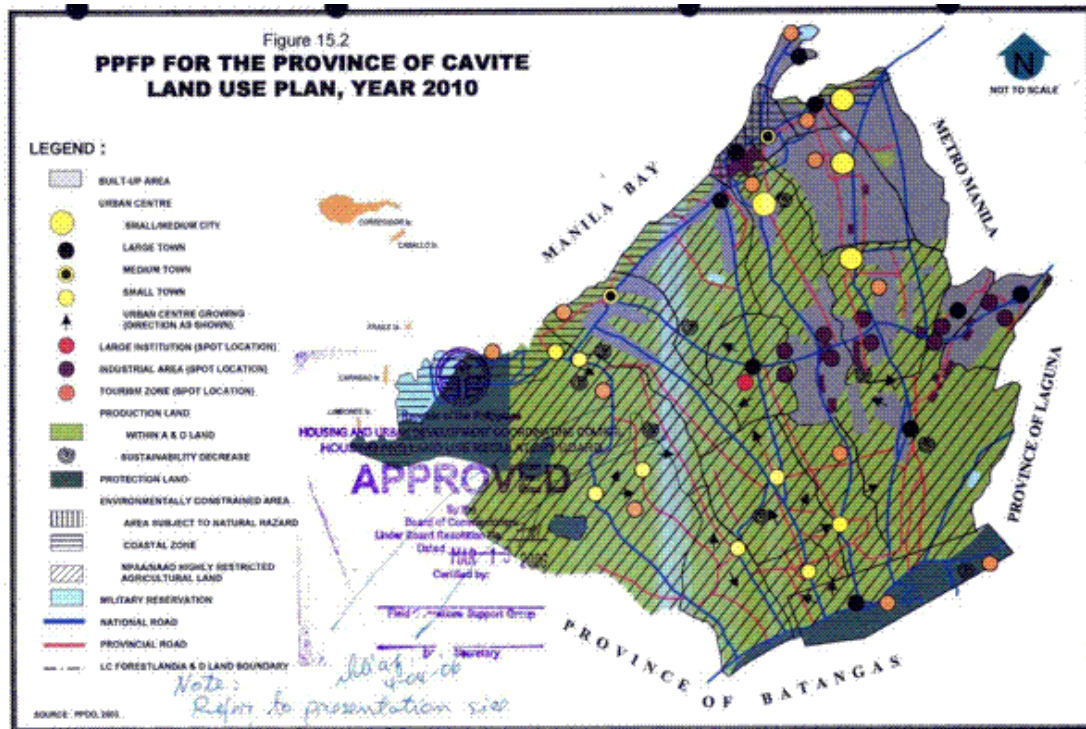


## 2.07 GIS for Coordination and Cooperation between Cities/Municipalities and the Province



The province exercises general supervision over component cities and municipalities to ensure that the acts of these LGUs are within the scope of their prescribed powers and functions.

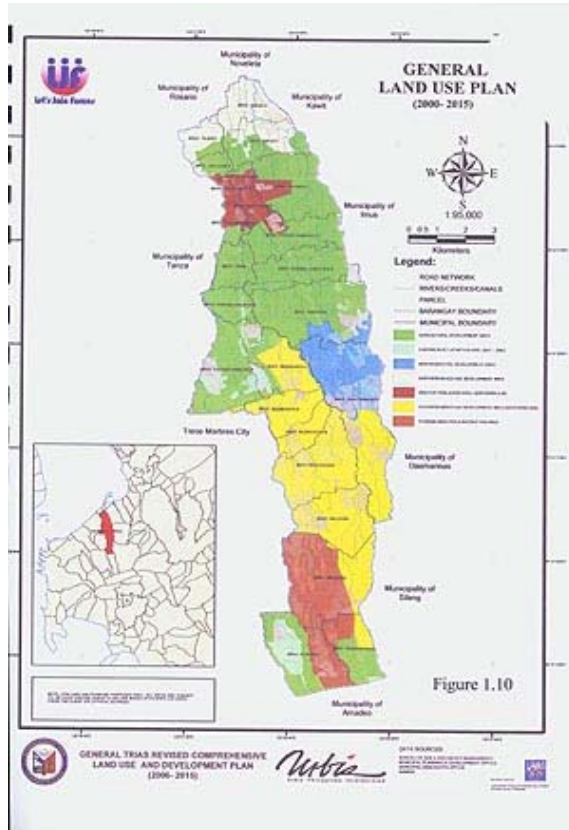
Alongside this function, the province is also mandated to prepare the **Provincial Physical Framework Plan (PPFP)** that will delineate the desired general physical development of the province, showing where the protected areas and preserved lands are, and the development and growth areas such as the settlement areas are identified or established.

The PPFP likewise provides the development plan for the physical infrastructures and shows the prospective locations for these, in support of the preferred development strategy of the framework plan.

The province sees to it that the municipalities and cities within its jurisdiction have their own integrated social, economic, physical and environmental plans, and are implementing these plans accordingly. The province also monitors and evaluates the implementation of the programs and projects as formulated in their plans.

In formulating the CLUP, the LGUs should be guided by the PPFP and the significant provisions that will have direct influence on the LGUs' respective development thrusts. These provisions include the LGU's designated role in the province, the projected degree or level of development, the proposed programs and projects to be implemented in the LGU and the proposed general land uses.

The Sangguniang Panlalawigan (SP) of the province is tasked to review and approve the CLUPs of their respective municipalities/cities. During the review, the Provincial Land Use Committee (as the SP's technical arm) will determine if the province's various relevant sectoral and physical development plans pertaining to the concerned LGUs have been taken into consideration and integrated in their CLUPs.



**Municipality of Gen. Trias**

and compare the CLUPs of cities/municipalities within their jurisdiction and check if it is consistent within the thrust of the PFP. Further, with the use of GIS, digital CLUPs can be easily incorporated to see and check if the adjacent land uses between and among municipalities are synchronized.

So far, only a few provinces have adopted GIS, but there has been no standard symbology adopted or proposed. The GIS Cookbook provides the recommended guidelines which can also be used as reference for the preparation of the PFP.

The institutional linkages among the LGUs are well in place. However, there is room for improvement in the “information links” among them that allow prompt and uncomplicated access not only to the plans and programs of the Provincial Governments, but also to sectoral plans and programs of the national government agencies in the province.

The use of GIS within the LGUs is a vital factor in terms of data sharing in the preparation of the PFPs and CLUPs, as well as in the review of the CLUPs by the Provincial Government. With the province coordinating with the LGUs, they can share the available digital data acquired by the province for thematic mapping purposes. It not only enhances the presentation of the maps but increases the accuracy of the information, as well.

Having a CLUP with GIS maps is beneficial because it would be easy for the planners in the province to review